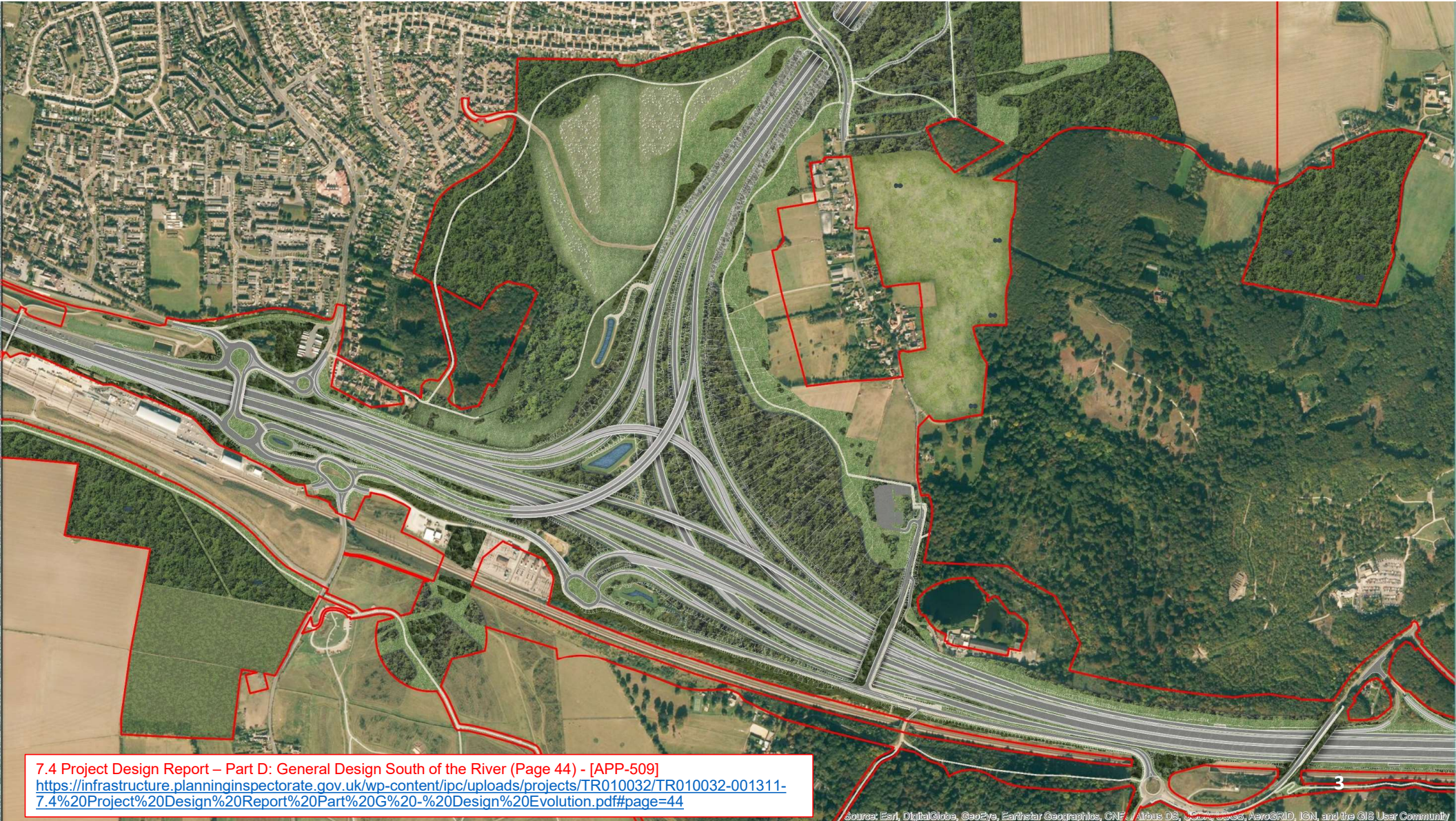


ISH 3

Siting and Land Take and
Design Mitigation – Q3, 4, 5 & 6

Agenda Item 3: A2/M2/LTC Intersection

b) Siting and Land Take



7.4 Project Design Report – Part D: General Design South of the River (Page 44) - [APP-509]
<https://infrastructure.planninginspectorate.gov.uk/wp-content/ipc/uploads/projects/TR010032/TR010032-001311-7.4%20Project%20Design%20Report%20Part%20G%20-%20Design%20Evolution.pdf#page=44>

Source: Esri, DigitalGlobe, GeoEye, Earthstar Geographics, CNR, Airbus DS, USDA, AeroGRID, IGN, and the GIS User Community

Agenda Item 3: A2/M2/LTC Intersection

c) Design Mitigations

Existing Landscape Character Areas

7.4 Project Design Report, Part C: Design Rationale

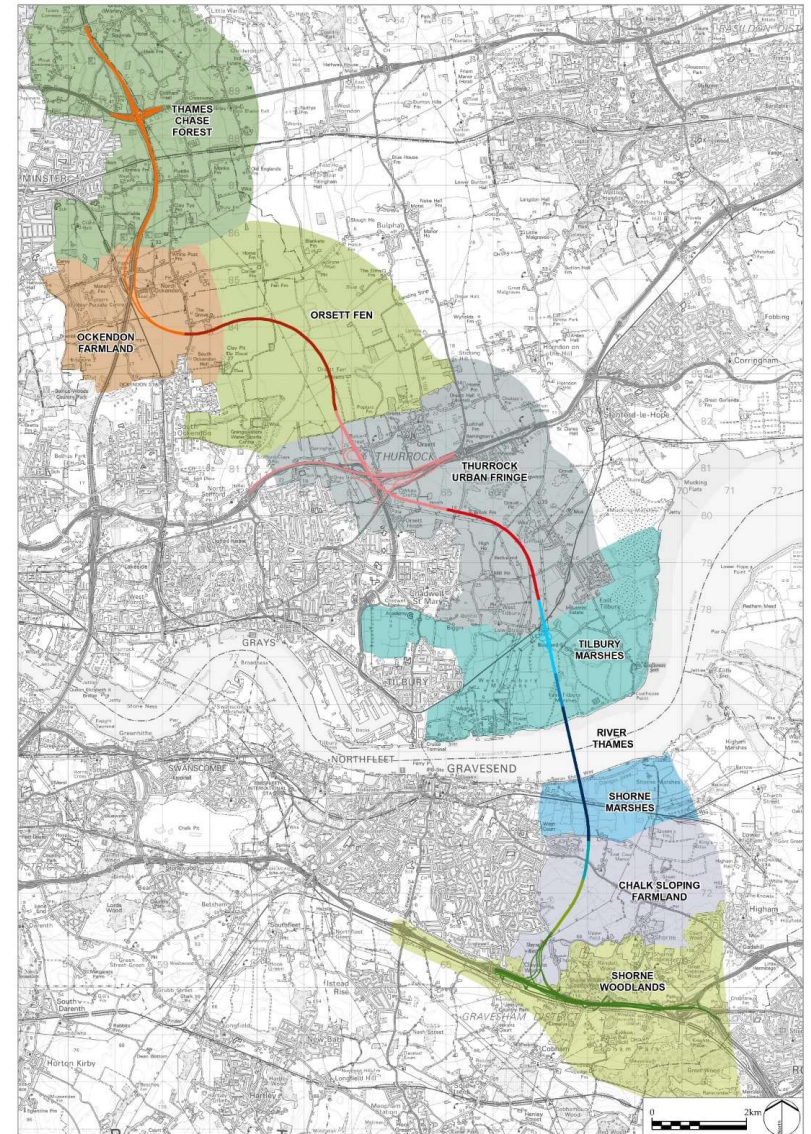
'3.5.2 The design seeks to combine mitigations as efficiently as practicable to provide maximum benefit. An example of this would be providing woodland planting at junctions. The landscape character analysis showed that there were woodlands and wooded ridges at the three principle junctions on the Project route at the A2/M2, A13 and M25. Woodland planting here will be appropriate to context and help screen the junction from local views and mitigates impacts on existing woodland habitat. This planting typology has the added benefit that, once mature, it would narrow the road users' focus in at the junctions: the place where most concentration is required to navigate...'

As part of the Preliminary Design response summary to the 10 Principles of Good Design;

'Makes roads understandable

4.1.9 As part of the wider design narrative, a design rationale around maximising the woodland planting around the main junctions on the route (A2 junction, A13 junction and M25 junctions) was developed to keep views inward focused for road users and not distract when making driving decisions within the junctions.'

7.4 Project Design Report – Part C: Design Rationale (Page 8) - [APP-508]
<https://infrastructure.planninginspectorate.gov.uk/wp-content/ipc/uploads/projects/TR010032/TR010032-001304-7.4%20Project%20Design%20Report%20Part%20C%20-%20Design%20Rationale.pdf>





Existing Landscape

M2/A2/A122 Lower Thames Crossing Junction

7.4 Project Design Report – Part D: General Design South of the River (Page 27) - [APP-509]
<https://infrastructure.planninginspectorate.gov.uk/wp-content/ipc/uploads/projects/TR010032/TR010032-001307-7.4%20Project%20Design%20Report%20Part%20D%20-%20General%20Design%20South%20of%20the%20River.pdf#page=27>

Design at Statutory Consultation (2018)

M2/A2/A122 Lower Thames Crossing Junction



7.4 Project Design Report – Part G: Design Evolution (Page 12) - [APP-514]
<https://infrastructure.planninginspectorate.gov.uk/wp-content/ipc/uploads/projects/TR010032/TR010032-001311-7.4%20Project%20Design%20Report%20Part%20G%20-%20Design%20Evolution.pdf#page=12>



Design at Supplementary Consultation (2020)

M2/A2/A122 Lower Thames Crossing Junction

7.4 Project Design Report – Part G: Design Evolution (Page 13) - [APP-514]
<https://infrastructure.planninginspectorate.gov.uk/wp-content/ipc/uploads/projects/TR010032/TR010032-001311-7.4%20Project%20Design%20Report%20Part%20G%20-%20Design%20Evolution.pdf#page=13>

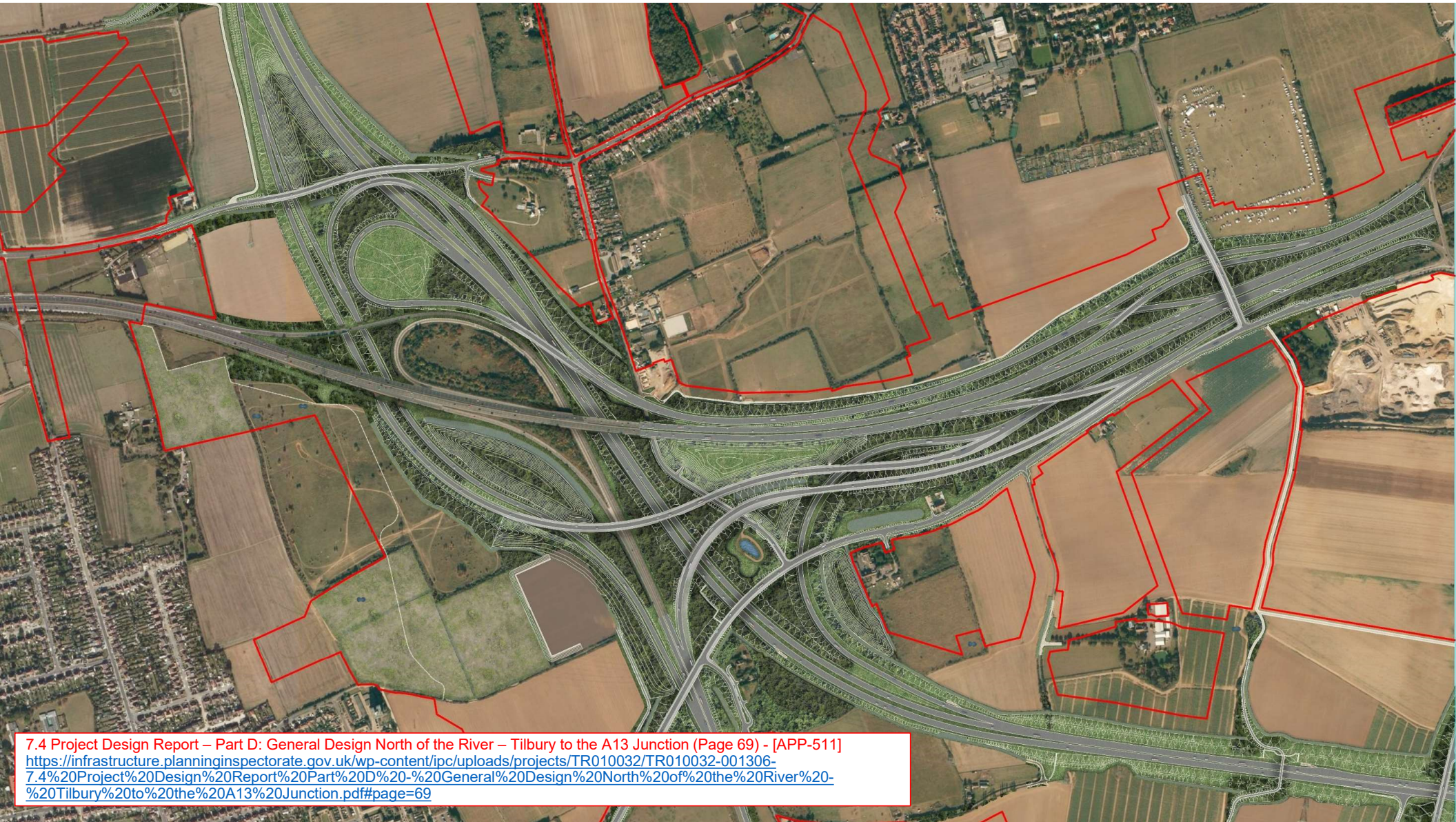


Design at DCO (2022) M2/A2/A122 Lower Thames Crossing Junction

7.4 Project Design Report – Part D: General Design South of the River (Page 37) - [APP-509]
<https://infrastructure.planninginspectorate.gov.uk/wp-content/ipc/uploads/projects/TR010032/TR010032-001307-7.4%20Project%20Design%20Report%20Part%20D%20-%20General%20Design%20South%20of%20the%20River.pdf#page=37>

Agenda Item 4: A13/ A1089/ LTC Intersection

b) Siting and Land Take



7.4 Project Design Report – Part D: General Design North of the River – Tilbury to the A13 Junction (Page 69) - [APP-511]
<https://infrastructure.planninginspectorate.gov.uk/wp-content/ipc/uploads/projects/TR010032/TR010032-001306-7.4%20Project%20Design%20Report%20Part%20D%20-%20General%20Design%20North%20of%20the%20River%20-%20Tilbury%20to%20the%20A13%20Junction.pdf#page=69>

Agenda Item 4: A13/ A1089/ LTC Intersection

c) Structures and Design Mitigations

Existing Landscape

A13 Junction



7.4 Project Design Report – Part D: General Design North of the River – Tilbury to the A13 Junction (Page 63), Plate 1 - [APP-511]
<https://infrastructure.planninginspectorate.gov.uk/wp-content/ipc/uploads/projects/TR010032/TR010032-001306-7.4%20Project%20Design%20Report%20Part%20D%20-%20General%20Design%20North%20of%20the%20River%20-%20Tilbury%20to%20the%20A13%20Junction.pdf#page=63>

Design at Statutory Consultation (2018)

A13 Junction



5.1 Consultation Report - Appendix M - Statutory Consultation material (Page 103) Figure 5.23 - [APP-082]
<https://infrastructure.planninginspectorate.gov.uk/wp-content/ipc/uploads/projects/TR010032/TR010032-001216-5.1%20Consultation%20Report%20-%20App%20M%20-%20Statutory%20consultation%20material.pdf#page=105>

Design at DCO (2022) A13 Junction

7.4 Project Design Report – Part D: General Design North of the River – Tilbury to the A13 Junction (Page 61) - [APP-511]
<https://infrastructure.planninginspectorate.gov.uk/wp-content/ipc/uploads/projects/TR010032/TR010032-001306-7.4%20Project%20Design%20Report%20Part%20D%20-%20General%20Design%20North%20of%20the%20River%20-%20Tilbury%20to%20the%20A13%20Junction.pdf#page=61>

Existing Landscape

A13 Junction and Chadwell Link



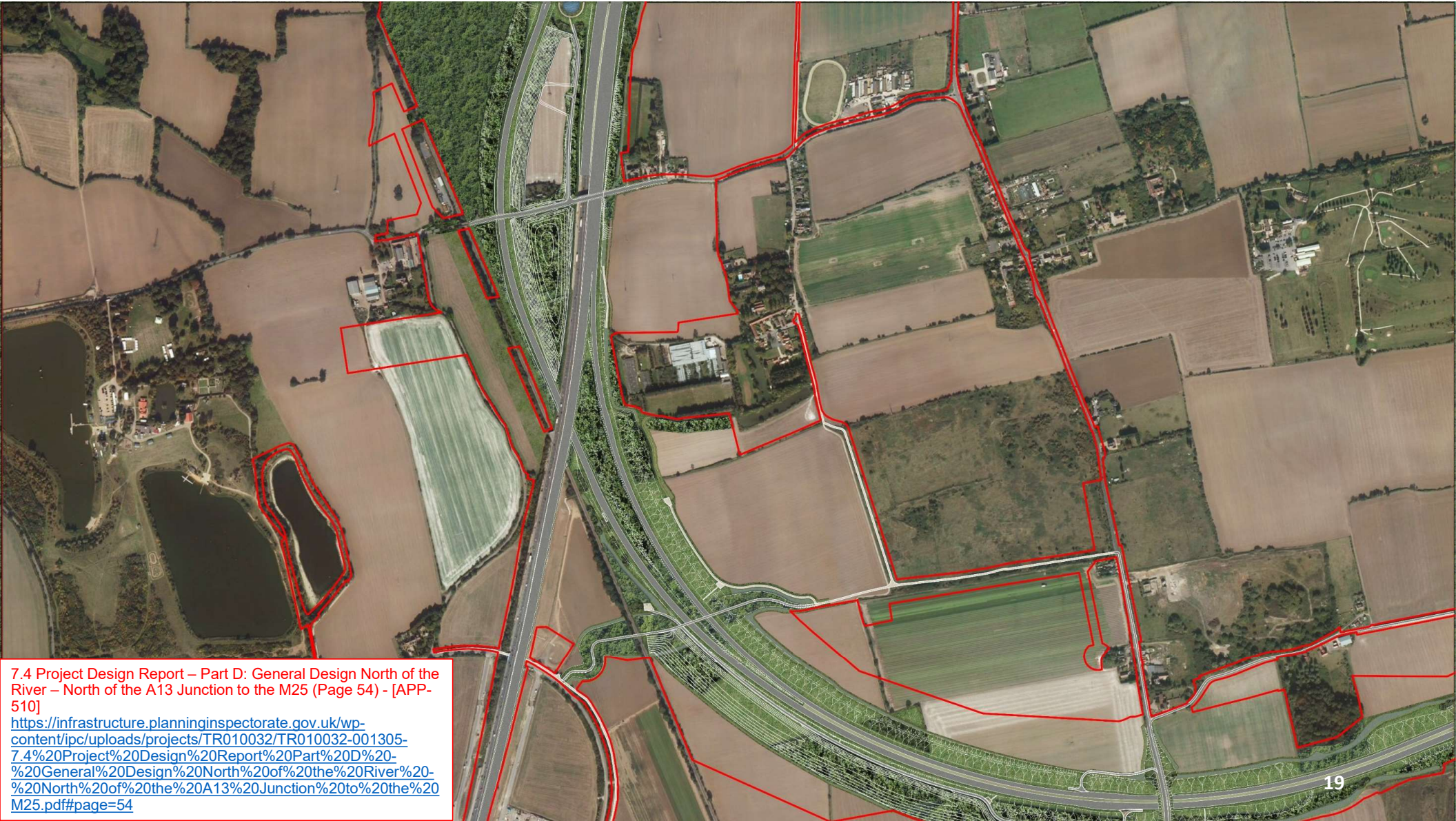
5.1 Consultation Report - Appendix R – Design Refinement Consultation material (Page 94) Figure 3-27 - [APP-086]
<https://infrastructure.planninginspectorate.gov.uk/wp-content/ipc/uploads/projects/TR010032/TR010032-001220-5.1%20Consultation%20Report%20-%20App%20R%20-%20Design%20refinement%20consultation%20material.pdf#pdf#page=95>

Design at DCO (2022) A13 Junction – and Chadwell Link

7.4 Project Design Report: Part D General Design North of the River – Tilbury to the A13 Junction (Page 58) - [APP-511]
<https://infrastructure.planninginspectorate.gov.uk/wp-content/ipc/uploads/projects/TR010032/TR010032-001306-7.4%20Project%20Design%20Report%20Part%20D%20-%20General%20Design%20North%20of%20the%20River%20-%20Tilbury%20to%20the%20A13%20Junction.pdf#page=58>

Agenda Item 5: M25 / LTC Intersection

b) Siting and Land Take



7.4 Project Design Report – Part D: General Design North of the River – North of the A13 Junction to the M25 (Page 54) - [APP-510]
<https://infrastructure.planninginspectorate.gov.uk/wp-content/uploads/projects/TR010032/TR010032-001305-7.4%20Project%20Design%20Report%20Part%20D%20-%20General%20Design%20North%20of%20the%20River%20-%20North%20of%20the%20A13%20Junction%20to%20the%20M25.pdf#page=54>

Agenda Item 5: M25 / LTC Intersection

c) Structures and Design Mitigations

Existing Landscape

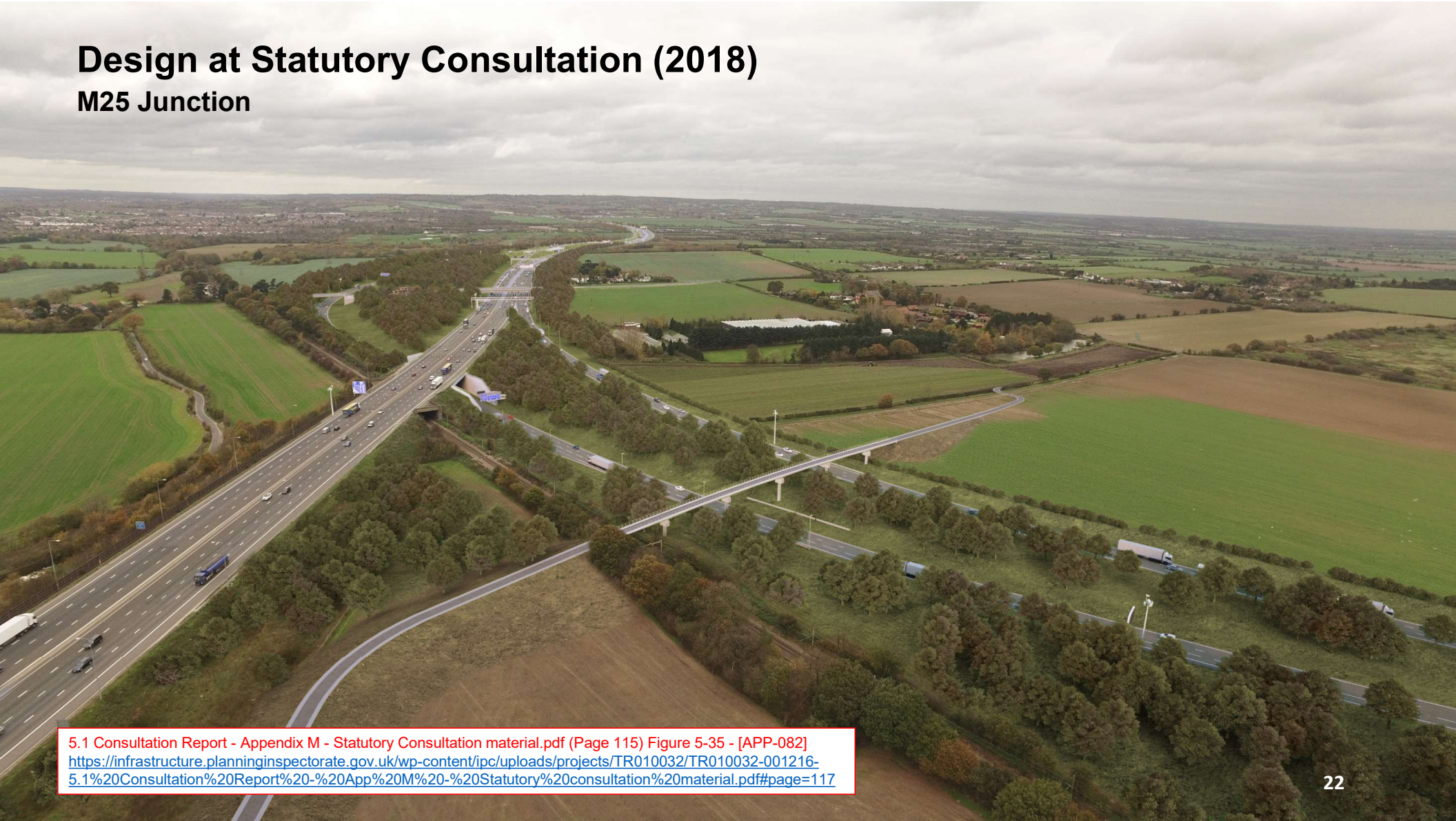
M25 Junction



5.1 Consultation Report - Appendix M - Statutory Consultation material.pdf (Page 115) Figure 5-34 - [APP-082]
<https://infrastructure.planninginspectorate.gov.uk/wp-content/ipc/uploads/projects/TR010032/TR010032-001216-5.1%20Consultation%20Report%20-%20App%20M%20-%20Statutory%20consultation%20material.pdf#page=117>

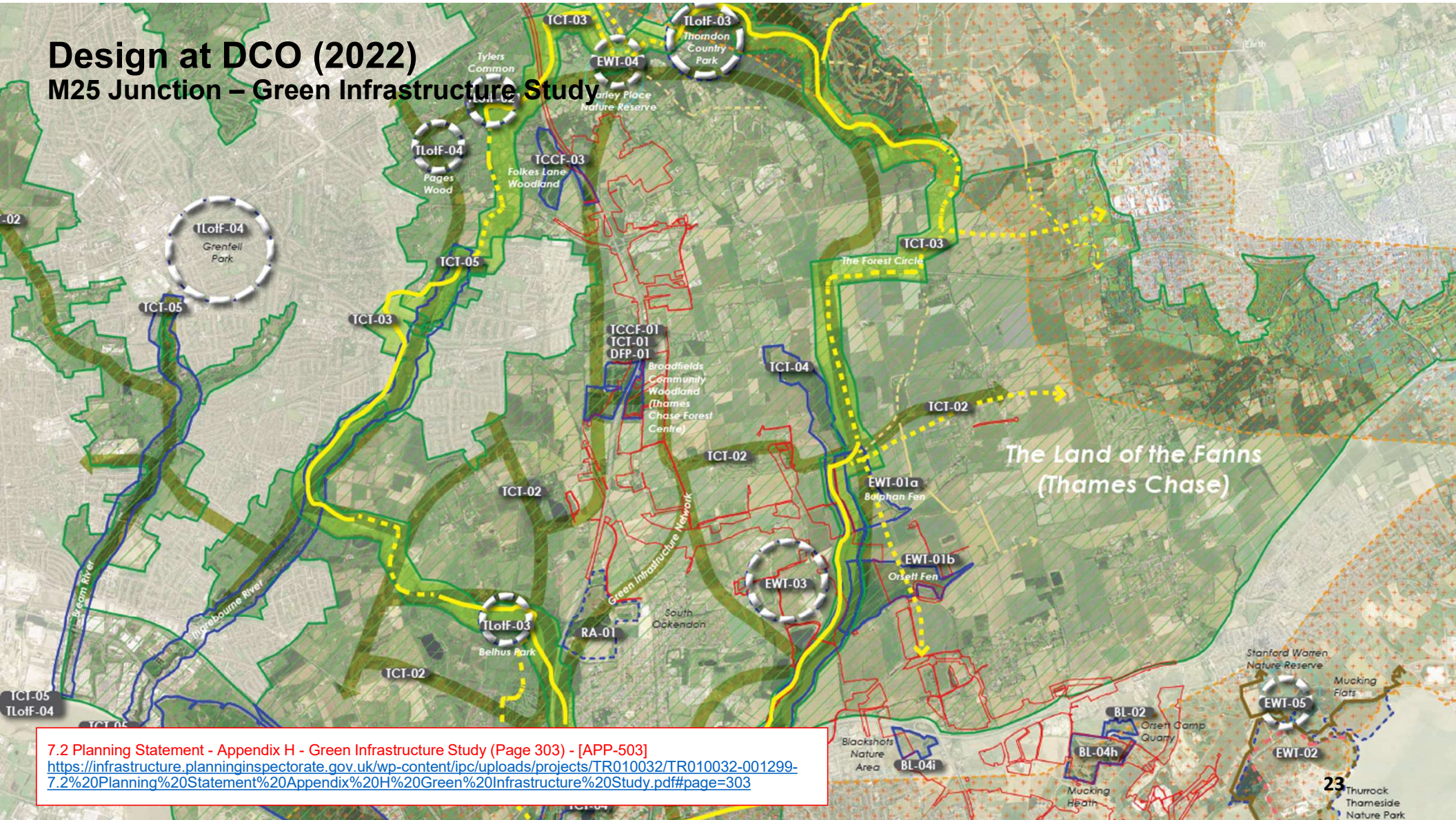
Design at Statutory Consultation (2018)

M25 Junction



5.1 Consultation Report - Appendix M - Statutory Consultation material.pdf (Page 115) Figure 5-35 - [APP-082]
<https://infrastructure.planninginspectorate.gov.uk/wp-content/ipc/uploads/projects/TR010032/TR010032-001216-5.1%20Consultation%20Report%20-%20App%20M%20-%20Statutory%20consultation%20material.pdf#page=117>

Design at DCO (2022) M25 Junction – Green Infrastructure Study



7.2 Planning Statement - Appendix H - Green Infrastructure Study (Page 303) - [APP-503]
<https://infrastructure.planninginspectorate.gov.uk/wp-content/ipc/uploads/projects/TR010032/TR010032-001299-7.2%20Planning%20Statement%20Appendix%20H%20Green%20Infrastructure%20Study.pdf#page=303>

Existing Landscape

M25 Junction



5.1 Consultation Report - Appendix R – Design Refinement consultation material.pdf (Page 108) Figure 3-32 - [APP-086]
<https://infrastructure.planninginspectorate.gov.uk/wp-content/ipc/uploads/projects/TR010032/TR010032-001220-5.1%20Consultation%20Report%20-%20App%20R%20-%20Design%20refinement%20consultation%20material.pdf#pdf#page=109>

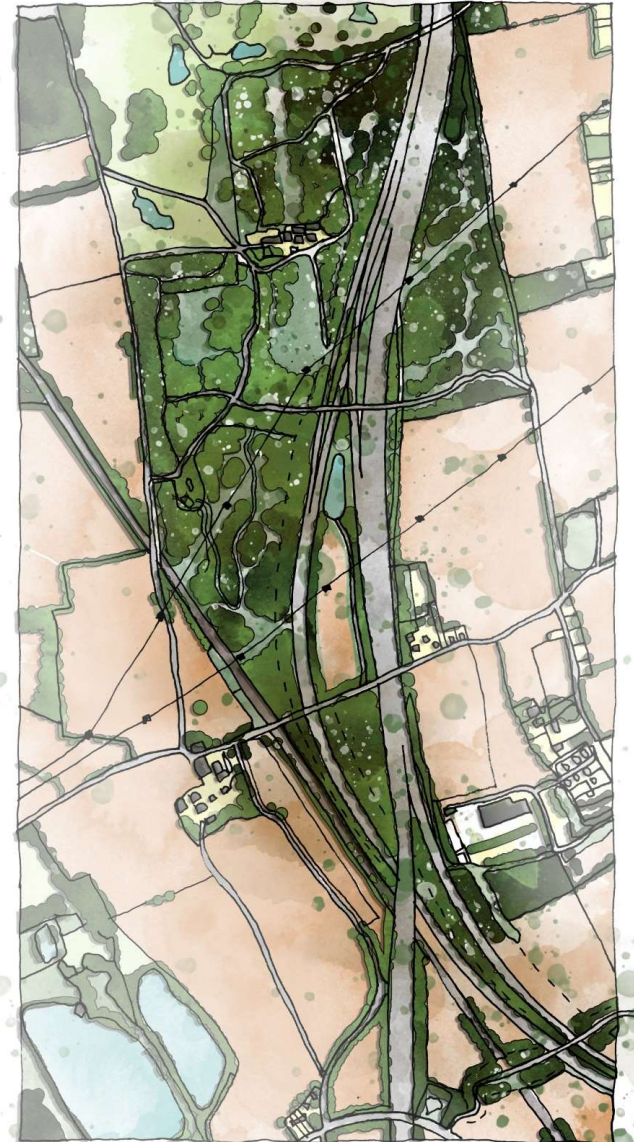
An aerial photograph showing a multi-lane motorway (M25) curving through a rural landscape. A river flows parallel to the motorway on the left side. The surrounding area includes agricultural fields, a golf course, and some residential buildings. The sky is clear and bright.

Design at DCO (2022) M25 Junction

7.4 Project Design Report – Part D: General Design North of the River – North of the A13 Junction to the M25 (Page 35) - [APP-510]

<https://infrastructure.planninginspectorate.gov.uk/wp-content/ipc/uploads/projects/TR010032/TR010032-001305-7.4%20Project%20Design%20Report%20Part%20D%20-%20General%20Design%20North%20of%20the%20River%20-%20North%20of%20the%20A13%20Junction%20to%20the%20M25.pdf#page=35>

Design at DCO (2022) M25 Junction – woodland planting



7.4 Project Design Report – Part D: General Design North of the River – North of the A13 Junction to the M25 (Page 55) - [APP-510]
<https://infrastructure.planninginspectorate.gov.uk/wp-content/uploads/projects/TR010032/TR010032-001305-7.4%20Project%20Design%20Report%20Part%20D%20-%20General%20Design%20North%20of%20the%20River%20-%20North%20of%20the%20A13%20Junction%20to%20the%20M25.pdf#page=55>

Agenda Item 6: Alignment Choices

a) Structures and Design Mitigations

Existing Landscape

Gravesend Link and South Portal Approach



7.4 Project Design Report – Part D: General Design South of the River (Page 59) - [APP-509]
<https://infrastructure.planninginspectorate.gov.uk/wp-content/ipc/uploads/projects/TR010032/TR010032-001307-7.4%20Project%20Design%20Report%20Part%20D%20-%20General%20Design%20South%20of%20the%20River.pdf#page=59>

Design at Statutory Consultation (2018) Gravesend Link and South Portal Approach



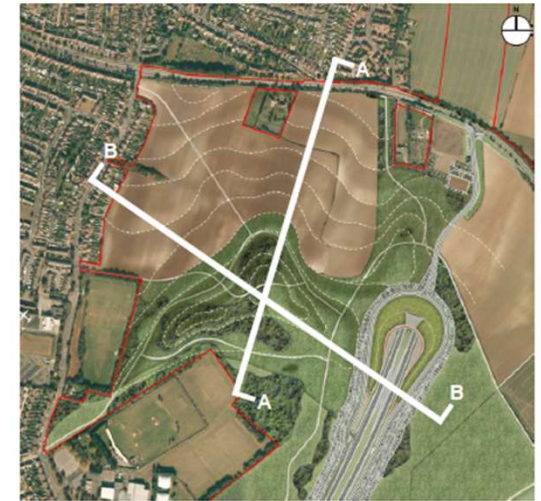
5.1 Consultation Report - Appendix M - Statutory Consultation material.pdf (Page 86) Figure 5-10 - [APP-082]
<https://infrastructure.planninginspectorate.gov.uk/wp-content/ipc/uploads/projects/TR010032/TR010032-001216-5.1%20Consultation%20Report%20-%20App%20M%20-%20Statutory%20consultation%20material.pdf#page=88>

Design at Supplementary Consultation (2020) Gravesend Link and South Portal Approach



7.4 Project Design Report – Part G: Design Evolution (Page 39) - [APP-514]
<https://infrastructure.planninginspectorate.gov.uk/wp-content/ipc/uploads/projects/TR010032/TR010032-001311-7.4%20Project%20Design%20Report%20Part%20G%20-%20Design%20Evolution.pdf#page=39>

Design at DCO (2020) Gravesend Link and South Portal Approach – Chalk Park



Chalk Park plan showing contours of the landscape and section cuts



Illustrative cross section BB through the earthworks and the Project at Chalk Park

Project Design Report: Part D: General Design South of the River (Page 65) - [APP-509]
<https://infrastructure.planninginspectorate.gov.uk/wp-content/ipc/uploads/projects/TR010032/TR010032-001307-7.4%20Project%20Design%20Report%20Part%20D%20-%20General%20Design%20South%20of%20the%20River.pdf#page=65>

Design at Supplementary Consultation (2020)

Gravesend Link and South Portal Approach



7.4 Project Design Report – Part G: Design Evolution (Page 39) - [APP-514]
<https://infrastructure.planninginspectorate.gov.uk/wp-content/ipc/uploads/projects/TR010032/TR010032-001311-7.4%20Project%20Design%20Report%20Part%20G%20-%20Design%20Evolution.pdf#page=39>

Design at DCO (2020) Gravesend Link and South Portal Approach



7.4 Project Design Report – Part F: Structures and Architecture (Page 40) - [APP-513]
<https://infrastructure.planninginspectorate.gov.uk/wp-content/ipc/uploads/projects/TR010032/TR010032-001314-7.4%20Project%20Design%20Report%20Part%20F%20-%20Structures%20and%20Architecture.pdf#page=40>

Existing Landscape

Chadwell Link



5.1 Consultation Report - Appendix Q - Supplementary Consultation material.pdf (Page 87) Figure 5-34 - [APP-085]
<https://infrastructure.planninginspectorate.gov.uk/wp-content/ipc/uploads/projects/TR010032/TR010032-001219-5.1%20Consultation%20Report%20-%20App%20Q%20-%20Supplementary%20Consultation%20material.pdf#page=90>

Design at Supplementary Consultation (2020) Chadwell Link



5.1 Consultation Report - Appendix Q - Supplementary Consultation material.pdf (Page 87) Figure 5-35 - [APP-085]
<https://infrastructure.planninginspectorate.gov.uk/wp-content/ipc/uploads/projects/TR010032/TR010032-001219-5.1%20Consultation%20Report%20-%20App%20Q%20-%20Supplementary%20Consultation%20material.pdf#page=90>

Design at DCO (2022) Chadwell Link



7.4 Project Design Report – Part D: General Design North of the River – Tilbury to the A13 Junction (Page 33) - [APP-511]
<https://infrastructure.planninginspectorate.gov.uk/wp-content/ipc/uploads/projects/TR010032/TR010032-001306-7.4%20Project%20Design%20Report%20Part%20D%20-%20General%20Design%20North%20of%20the%20River%20-%20Tilbury%20to%20the%20A13%20Junction.pdf#page=33>

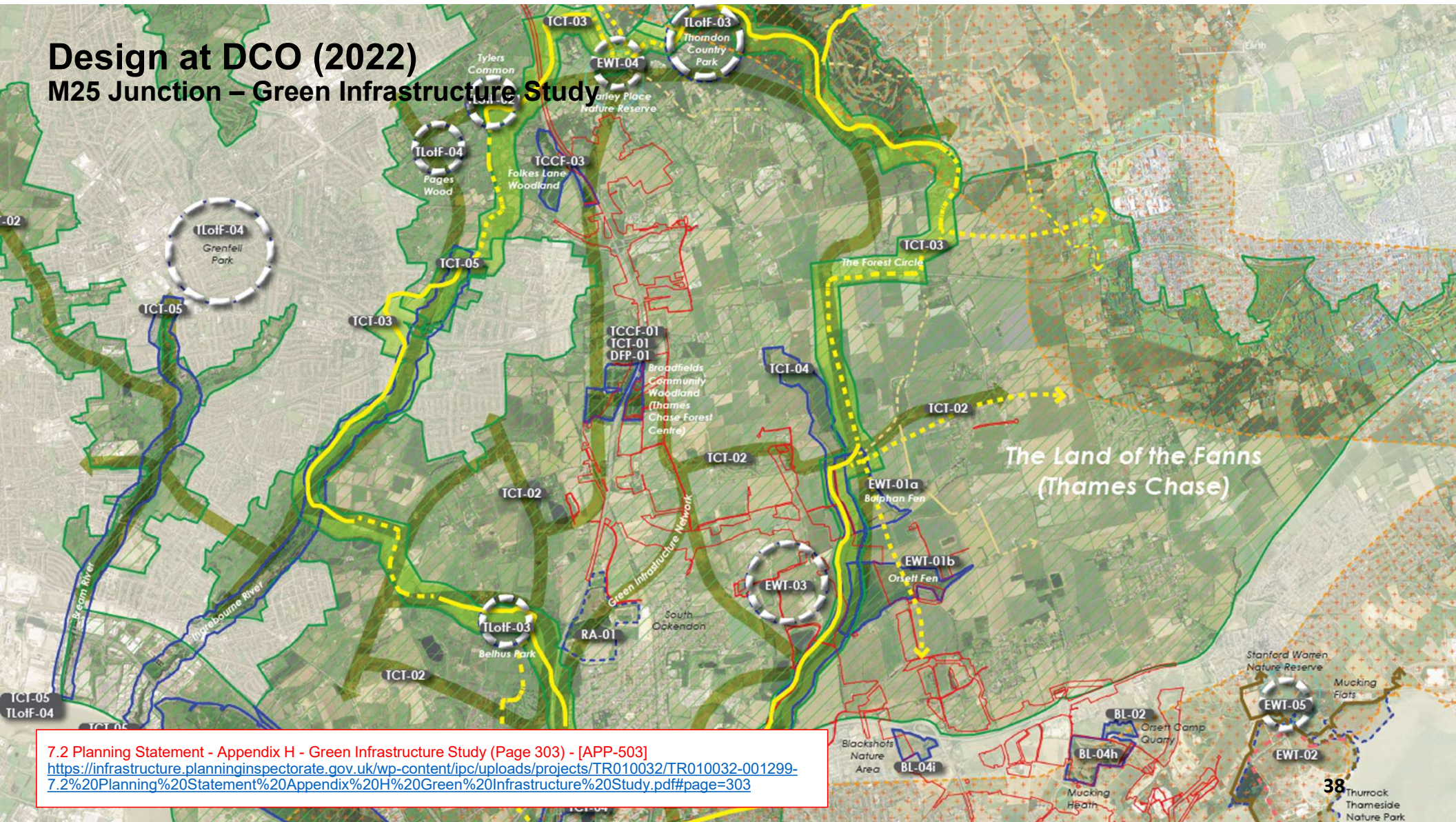
Existing Landscape

Ockendon Link



7.4 Project Design Report – Part D: General Design North of the River – North of the A13 Junction to the M25 (Page 6) - [APP-510]
<https://infrastructure.planninginspectorate.gov.uk/wp-content/ipc/uploads/projects/TR010032/TR010032-001305-7.4%20Project%20Design%20Report%20Part%20D%20-%20General%20Design%20North%20of%20the%20River%20-%20North%20of%20the%20A13%20Junction%20to%20the%20M25.pdf#page=6>

Design at DCO (2022) M25 Junction – Green Infrastructure Study





Existing Landscape Ockendon Link

7.4 Project Design Report – Part D: General Design North of the River – North of the A13 Junction to the M25 (Page 21) Plate 9 - [APP-510]
<https://infrastructure.planninginspectorate.gov.uk/wp-content/ipc/uploads/projects/TR010032/TR010032-001305-7.4%20Project%20Design%20Report%20Part%20D%20-%20General%20Design%20North%20of%20the%20River%20-%20North%20of%20the%20A13%20Junction%20to%20the%20M25.pdf#page=21>

An aerial photograph showing a multi-lane highway bridge spanning a green valley. The bridge has several support pillars. In the foreground, a tall, lattice-structured power pylon stands in a field. The surrounding landscape is a mix of green fields and some yellowish-brown areas, possibly due to crop rotation or soil conditions. The sky is clear and bright.

Design at Supplementary Consultation (2020)

Ockendon Link

5.1 Consultation Report - Appendix Q - Supplementary Consultation material.pdf (Page 110) Figure 5-52 - [APP-085]
<https://infrastructure.planninginspectorate.gov.uk/wp-content/ipc/uploads/projects/TR010032/TR010032-001219-5.1%20Consultation%20Report%20-%20App%20Q%20-%20Supplementary%20Consultation%20material.pdf#page=113>

Existing Landscape

Ockendon Link



7.4 Project Design Report – Part D: General Design North of the River – North of the A13 Junction to the M25 (Page 6) - [APP-510]
<https://infrastructure.planninginspectorate.gov.uk/wp-content/ipc/uploads/projects/TR010032/TR010032-001305-7.4%20Project%20Design%20Report%20Part%20D%20-%20General%20Design%20North%20of%20the%20River%20-%20North%20of%20the%20A13%20Junction%20to%20the%20M25.pdf#page=6>

Design at DCO (2022)

Ockendon Link



7.4 Project Design Report – Part D: General Design North of the River – North of the A13 Junction to the M25 (Page 15) - [APP-510]
<https://infrastructure.planninginspectorate.gov.uk/wp-content/ipc/uploads/projects/TR010032/TR010032-001305-7.4%20Project%20Design%20Report%20Part%20D%20-%20General%20Design%20North%20of%20the%20River%20-%20North%20of%20the%20A13%20Junction%20to%20the%20M25.pdf#page=15>

Design at DCO (2022)

Ockendon Link – Water vole habitat creation



7.4 Project Design Report – Part D: General Design North of the River – North of the A13 Junction to the M25 (Page 29) - [APP-510]
<https://infrastructure.planninginspectorate.gov.uk/wp-content/ipc/uploads/projects/TR010032/TR010032-001305-7.4%20Project%20Design%20Report%20Part%20D%20-%20General%20Design%20North%20of%20the%20River%20-%20North%20of%20the%20A13%20Junction%20to%20the%20M25.pdf#page=29>



Design at DCO (2022)
Ockendon Link – strengthened woodland

**THE
WILDERNESS**

EXISTING LANDFILL SITE

7.4 Project Design Report – Part D: General Design North of the River – North of the A13 Junction to the M25 (Page 27) - [APP-510]
<https://infrastructure.planninginspectorate.gov.uk/wp-content/ipc/uploads/projects/TR010032/TR010032-001305-7.4%20Project%20Design%20Report%20Part%20D%20-%20General%20Design%20North%20of%20the%20River%20-%20North%20of%20the%20A13%20Junction%20to%20the%20M25.pdf#page=27>



Existing Landscape M25 Improvement

5.1 Consultation Report - Appendix M - Statutory Consultation material.pdf (Page 123) Figure 5-38 - [APP-082]
<https://infrastructure.planninginspectorate.gov.uk/wp-content/ipc/uploads/projects/TR010032/TR010032-001216-5.1%20Consultation%20Report%20-%20App%20M%20-%20Statutory%20consultation%20material.pdf#page=125>



Design at Statutory Consultation (2018)

M25 Improvement

5.1 Consultation Report - Appendix M - Statutory Consultation material.pdf (Page 123) Figure 5-39 - [APP-082]
<https://infrastructure.planninginspectorate.gov.uk/wp-content/ipc/uploads/projects/TR010032/TR010032-001216-5.1%20Consultation%20Report%20-%20App%20M%20-%20Statutory%20consultation%20material.pdf#page=125>



Design at DCO (2022) M25 Improvement

7.4 Project Design Report – Part D: General Design North of the River – North of the A13 Junction to the M25 (Page 59) - [APP-510]
<https://infrastructure.planninginspectorate.gov.uk/wp-content/jpc/uploads/projects/TR010032/TR010032-001216-5.1%20Consultation%20Report%20-%20App%20M%20-%20Statutory%20consultation%20material.pdf#page=59>



Design at DCO (2022)
M25 Improvement

7.4 Project Design Report – Part D: General Design North of the River – North of the A13 Junction to the M25 (Page 58) - [APP-510]
<https://infrastructure.planninginspectorate.gov.uk/wp-content/ipc/uploads/projects/TR010032/TR010032-001216-5.1%20Consultation%20Report%20-%20App%20M%20-%20Statutory%20consultation%20material.pdf#page=58>